



Legionella, CMS S&C 17-30 & ASHRAE 188-2015



ANSI/ASHRAE Standard 188-2015

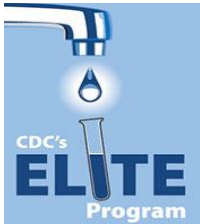
Legionellosis: Risk Management for Building Water Systems



ANSI/ASHRAE Standard 188-2015

ASHRAE 188-2015

ASHRAE 188-2015



If you manage multiple water systems in your building(s), Weas Engineering has the tools to help reduce the risk of infection caused by *Legionella* and other Waterborne Pathogens as well as assist in compliance with industry standards.

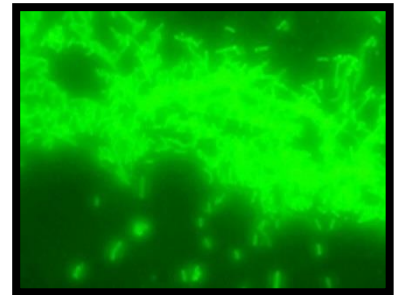
Our Water Safety products and services for this include:

- Preparation of Water Management Programs (WMP's) in compliance with CMS S&C 17-30 and ASHRAE 188-2015
- *Legionella* testing by our CDC ELITE & A2LA-certified lab
- Emergency & ongoing disinfection of *Legionella*-contaminated systems
- Point of Use (POU) filtration products
- Chemical feed and control equipment
- Support of secondary disinfection systems
- Cooling Tower Cleaning, Disinfection & Inspection
- Application of oxidizing and non-oxidizing biocides
- Training seminars on *Legionella*, CMS S&C 17-30 and ASHRAE 188

Weas Engineering can help you minimize *Legionella* growth in building water systems and cooling towers.



Legionella cells



Legionella cells

For more information about Weas Engineering Products & Services please contact your local representative at:

(317) 867-4477